

CERTIFICATE OF LOCATION OF GOVERNMENT CORNER

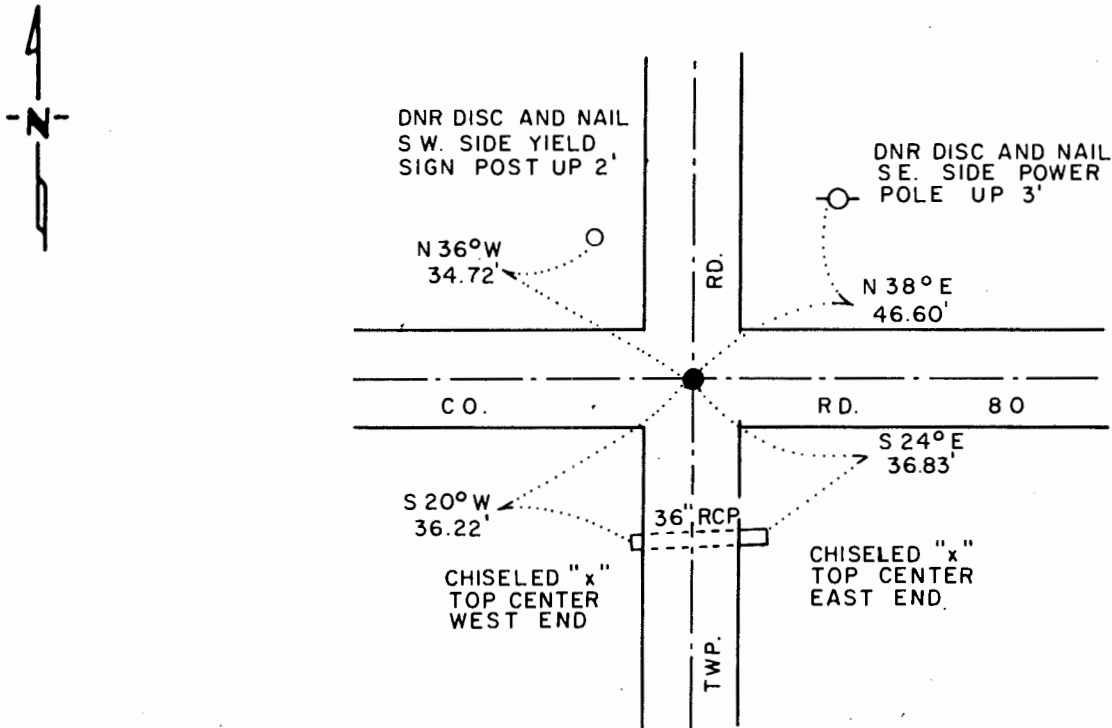
NORTHEAST Corner of Section 18, Township 108 N., Range 43 W., 5th P.M.

STATE OF MINNESOTA, County of MURRAY

At the corner location shown on the sketch:

- On 6-30-82 found a 10"x18"x14" FIELD STONE, DOWN 20", OVER A 7"x9"x13"
DATE BLACK FIELD STONE, DOWN 36"
 left monument as found, lowered monument, removed monument (explain)
- On 6-30-82 placed a 1 1/4"x1 1/4"x20" PERFORATED STEEL TUBE WITH
DATE ALUMINUM CAP STAMPED "DNR SURVEY MARKER", DOWN 0.5'

SKETCH OF REFERENCE TIES



TIES TAKEN 8-5-86
BEARINGS OBSERVED WITH COMPASS

Statement of evidence relative to this corner location is on back of page.

J.A.G. 8-18-86
FILE G-202

I hereby certify that this document and the data contained herein was prepared by me or under my direct supervision.

Lowell B. Pomeroy Jr. 9-10-86
SIGNATURE DATE

Registration No. 17005

- Land Surveyor, Professional Engineer
- County Surveyor, County Engineer

OFFICE OF THE COUNTY RECORDER

County of _____

I hereby certify that this document was filed in the Co. Recorders office at _____ .M. on the _____ day of _____ A.D., 19 _____

County Recorder _____

By _____, Deputy

DOCUMENT NO. _____

Northeast Corner Section 18, Township 108 North, Range 43 West

This corner was originally established by the U. S. General Land Office survey in 1866. The government notes show corner marked with a wood post set in mound of earth with pits and trench dug around the mound also deposited charcoal.

In June 1982, the DNR Bureau of Engineering contacted the following for corner information:

Murray County Offices of the Recorder and Highway Engineer
Pipestone County Office of the Recorder

The following information was obtained from the Murray County Highway Engineer's Office:

Surveyor's Record Book contains ties to government corners in Section 8, surveyor not indicated, dated 1940. Corner is shown as a concrete stone with ties:

R. P. tack in corner fence post S.W. 49.6 ft.
R. P. tack in corner fence post S.E. 49.4 ft.

In October 1956, the DNR Bureau of Engineering traversed to the area of the corner and located the corner from county ties obtained from the courthouse. Ties shown are from Surveyor's Record Book, dated 1940. A railroad spike was set at the corner for a surface monument.

The following information was obtained from the Murray County Highway Engineer's Office:

Surveyor's Record Book containing ties to government corners in Section 8, dated 1940, surveyor not indicated, also contains the following information dated September 1977. Found a concrete monument above a large field stone 2 ft. below grade. Placed an 18" iron pin over field stone and took ties:

R. P. nail and cap, power pole S. W. 50.50 ft.
nail and cap, post ESE 58.04 ft.
nail and cap, power pole, 45.90 ft. NE

This information also appears on a county corner tie sheet, dated 1977.

In June 1982, the DNR Bureau of Engineering traversed to the area of the corner and found a 1/2" by 18" rebar, down 2", over a 10" by 18" by 14" field stone down 20" with a 2" by 2" by 12" wood hub on its north side. This stone was over a 7" by 9" by 13" black field stone down 36" at natural ground. Reset stones as found and measured:

2648.90 ft. from the north quarter corner Section 18
2637.11 ft. from the north quarter corner Section 17
2651.31 ft. from the east quarter corner Section 7

Searched for and found record tie object as shown.

Accept the stones as the location of the corner.

Traverse information is available from the DNR Bureau of Engineering.

On August 5, 1986, revisited the corner and found the DNR Survey Marker as previously set in good condition and took ties as shown.